



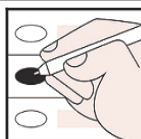
## OFFICIAL ABSENTEE / PROVISIONAL / EMERGENCY BALLOT

Troup County, Georgia

INSIDE CITY COUNCIL

Precinct: West Point

Statewide Special and Municipal General Election - November 04, 2025



### To Vote:

1. Use Black or Blue Ink to mark the ballot.
2. Completely fill in the empty oval to the left of the candidate name or choice in all races you wish to vote.
3. If voting for a Write-In candidate, completely fill in the oval to the left of the Write-In selection, then write the name of the Write-In candidate in the space provided.

### Warning

- Do **NOT** use red ink or felt tip pen to mark ballot.
- Do **NOT** circle, underline or mark through choices.
- Do **NOT** use check marks or X to mark ballot.
- Do **NOT** mark more choices per race than allowed.
- Do **NOT** sign, cut, tear or damage the ballot.

### If you make a mistake or change your mind on a selection:

- A.** Do not attempt to mark through the selection or attempt to erase. Write **"Spoiled"** across **the ballot AND across the return envelope.**
- B.** Mail or return the spoiled ballot and envelope to your county board of registrars; a new official absentee ballot will be mailed to you.

**If you decide to vote in-person:** Surrender the ballot to the poll manager at an early voting site within your county or the precinct to which you are assigned. You will then be permitted to vote a regular ballot.

*\*I understand that the offer or acceptance of money or any other object of value to vote for any particular candidate, list of candidates, issue, or list of issues included in this election constitutes an act of voter fraud and is a felony under Georgia law. "[O.C.G.A. 21-2-284(e), 21-2-285(h) and 21-2-383(a)]*

Statewide Special Election	General Election City of West Point	Troup County - Brunch Bill (Vote for One)
<b>For Public Service Commission - District 2</b> For Term Ending December 31, 2030 (Vote for One)  <input type="radio"/> <b>Tim Echols</b> (Incumbent) Republican  <input type="radio"/> <b>Alicia M. Johnson</b> Democrat  <input type="radio"/>  <b>Write-in</b>	<b>For City Council Member</b> (Vote for Three)  <input type="radio"/> <b>Joseph R. Downs, III</b> (Incumbent)  <input type="radio"/> <b>Joel Finlay</b> (Incumbent)  <input type="radio"/> <b>Aaron Lev</b>  <input type="radio"/> <b>Gloria Ramsey Marshall</b> (Incumbent)  <input type="radio"/>  <b>Write-in</b>  <b>Write-in</b>  <input type="radio"/>  <b>Write-in</b>	Shall the governing authority of Troup County be authorized to permit and regulate Sunday sales of distilled spirits or alcoholic beverage for beverage purposes by the link from 11:00 A.M. to 12:30 P.M.?  <input type="radio"/> <b>Yes</b>  <input type="radio"/> <b>No</b>
<b>For Public Service Commission - District 3</b> For Term Ending December 31, 2026 (Vote for One)  <input type="radio"/> <b>Fitz Johnson</b> (Incumbent) Republican  <input type="radio"/> <b>Peter Hubbard</b> Democrat  <input type="radio"/>  <b>Write-in</b>	<b>Special Election</b>	
	<b>Troup County Board of Education School Board Ad Valorem Taxes</b> (Vote for One)  Shall the Act which provides for a homestead exemption from Troup County school district ad valorem taxes for educational purposes for residents who are 65 years of age or over be amended so as to increase the exemption amount from \$40,000.00 to \$100,000.00 and the income cap from \$40,000.00 to \$50,000.00?  <input type="radio"/> <b>Yes</b>  <input type="radio"/> <b>No</b>	

Turn Ballot Over To Continue Voting

## Special Election

### Troup County Board of Education ESPLOST (Vote for One)

Shall a one percent sales and use tax for educational purposes be imposed, levied and collected in the Troup County School District (the "School District") for a period of time not to exceed twenty consecutive calendar quarters (5 years), beginning immediately upon the expiration of the one percent sales and use tax for educational purposes currently being collected, and for the raising of not more than \$110,000,000.00, for the purposes of acquiring, constructing and equipping the following capital outlay projects: (a) real and personal property, including, but not limited to, improved or unimproved land and existing buildings for future school, extra-curricular activity facilities, or administrative and services facility sites; (b) new schools and facilities of the School District including, without limitation, new school(s) as determined by growth, age, and/or maintenance needs of current facilities, physical education/athletic/extra-curricular facilities and equipment, locker rooms, classrooms, performance facilities, lunchrooms, gymnasiums, and warehouse expansions; (c) additions to, renovations of, repairs to, improvements to, and equipment for existing educational, administrative and services buildings, properties, and facilities of the School District, including, without limitation, HVAC, roofing, lighting and flooring replacements and renovations, physical education, cafeteria and auditorium facilities and improvements, resurfacing and parking facilities, and trailer replacements and/or additions; (d) technology to be used at all educational and administrative facilities, including, but not limited to, classroom technology infrastructure computers, laptops, tablets and mobile devices for students and staff, server wiring, wireless antennas, and other technology upgrades with necessary hardware, software, and programs; (e) security system upgrades, equipment and infrastructure to all educational and administrative facilities; (f) school buses (including installment payments); and (g) capitalized expenses incident thereto (including, but not limited to, the payment of implementation, administrative and management expenses, any capitalized interest, and reimbursements for expenditures for needs assessment for facilities); all in accordance with the facilities needs of the School District, as the same may be revised in accordance with the needs of the School District?

If imposition of the tax is approved by the voters, such vote shall also constitute approval of the issuance of general obligation debt of the Troup County School District in the principal amount of \$80,000,000 for the above purpose and the costs of issuance of such debt.

☐ Yes

☐ No

SAMPLE

